

Economic Impact of the Maritime Trades in Jefferson County, Washington: *Executive Summary*

Conducted by Martin Associates

www.martinassoc.net

June 2018



All Photos Courtesy of Elizabeth T. Becker

Overview of the PTMTA

The Port Townsend Marine Trade Association (PTMTA) is a non-profit organization of volunteer men and women employed in the marine trades. PTMTA's mission is to serve as a unified voice for the marine trades, promoting economic stability in the community and resolving issues that threaten the livelihood of the marine trades in Jefferson County. The marine trades cluster includes the economic impacts generated by firms located in Jefferson County providing boat building and repair; marinas and recreational boating; commercial fishing and seafood processing; maritime education and training; marine passenger and charter services; and government.

Jefferson County is located in the western portion of Washington State, spanning from Puget Sound in the east to the Pacific Ocean in the west. Jefferson County has a total of 2,183 square miles of which 379 square miles, 17 percent, is water, with a shoreline of approximately 235 miles. Eastern Jefferson County is bordered by the Strait of Juan de Fuca, Admiralty Inlet and the Hood Canal. Olympic National Forest, Olympic National Park and the Olympic Mountains lie in the center of Jefferson County. Western Jefferson County reaches into the Pacific Ocean.

Jefferson County is home to several marinas, commercial fishing and seafood processors, and recreational and commercial boat builders/maintenance operations that support the county's maritime operations. Several state and federal government agencies have operations in Jefferson County. Multiple organizations offer maritime education and training. Passenger activity is offered through several charter and sightseeing operations, as well as the Washington State Ferry Port Townsend Coupeville route.

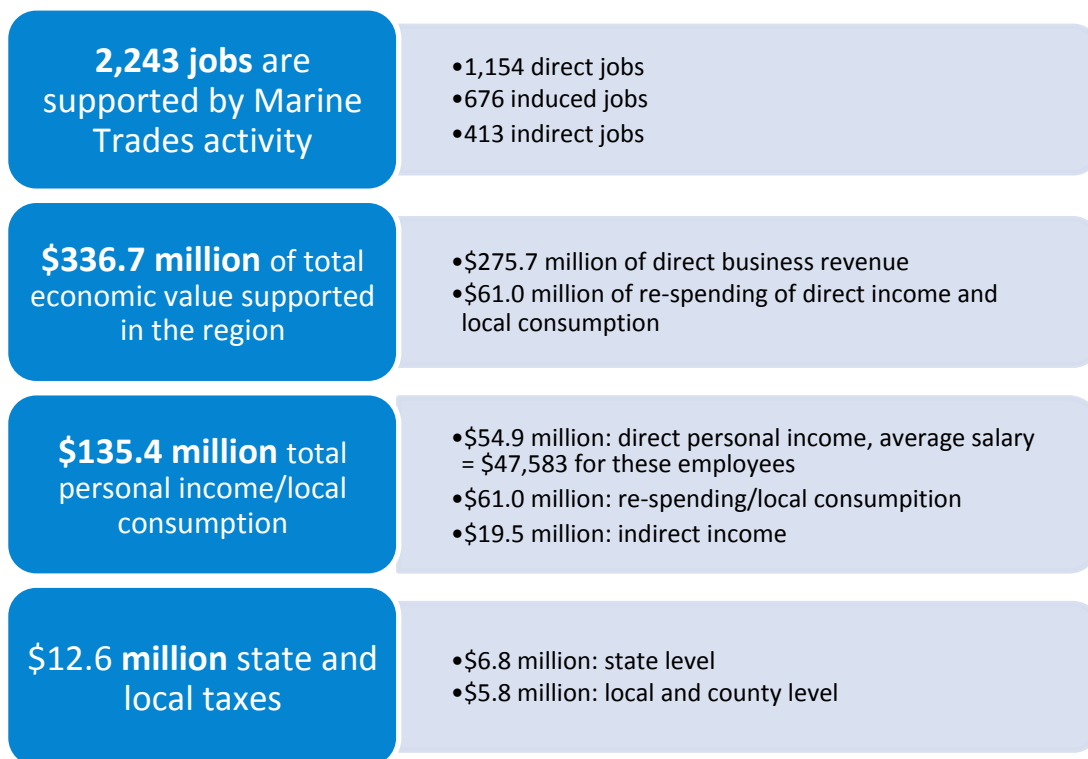


Economic Impact Analysis Methodology

Martin Associates, an internationally recognized, leading economic transportation consulting firm, was retained by the PTMTA to measure the local and regional economic impacts supported by marine trades activity in Jefferson County, WA. The study employs methodology and definitions that have been used by Martin Associates to measure the economic impacts of maritime activity at more than 500 ports in the United States and Canada, as well as at leading airports in the United States. It is to be

emphasized that only measurable impacts are included in this study. To ensure defensibility, the Martin Associates' approach to economic impact analysis is based on data developed through an extensive interview and telephone survey program of marine trades in Jefferson County. Specific re-spending models have been developed for Jefferson County to reflect the uniqueness of the surrounding regional economy.

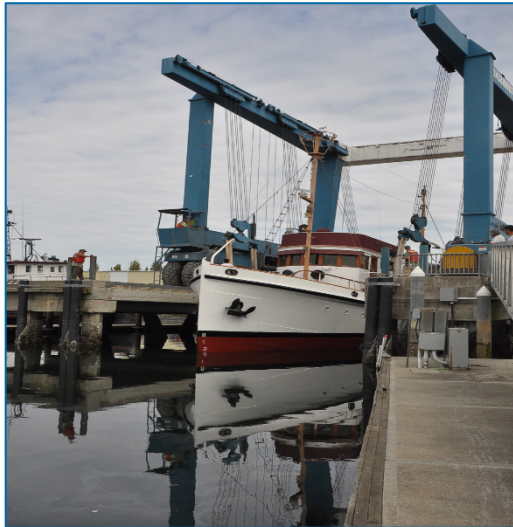
2017 Economic Impacts of the Maritime Trades - Summary of Results



*Totals may not add up exactly due to rounding

2017 PTMTA Economic Impact Results

The PTMTA supported **2,243 direct, induced, and indirect jobs** in Jefferson County, WA. Of these jobs, **1,154 jobs are directly** created by marine trades activities, while another **676 induced jobs**, are generated in Jefferson County as a result of local purchases made by those directly employed due to marine trades activity. There are **413 indirect jobs** supported in the Jefferson County as the result of \$39.8 million of local purchases made by directly dependent firms.



The 1,154 direct jobs **received \$54.9 million of direct wage and salary income**, for an average salary of \$47,583 for direct employees. As a result of the local purchases with this \$54.9 million of direct wages and salaries, an additional \$61.0 million of re-spending and local consumption expenditures were created in the state and county. This re-spending impact supported the 676 induced jobs. The indirect job holders received \$19.5 million in personal income. In total, \$135.4 million of personal income was supported by marine trades activity in Jefferson County.

Summary

The Marine Trades Cluster is an important economic force in Jefferson County, contributing \$336.7 million of total economic activity and supporting 2,243 jobs in Jefferson County. In order to sustain growth as an economic engine for Jefferson County and the state of Washington, emphasis should be placed on preserving the heritage and culture of marine trades in Jefferson County.



Local businesses received \$275.7 million of sales revenue from providing services to marine trades activity in Jefferson County. As a result of this marine trades activity, a total of **\$12.6 million of state and local tax revenue** was generated.



The **total economic value to the Seaport region is measured at \$336.7 million**. This consists of the direct business revenue of \$275.7 million and the re-spending and local consumption impact of \$61.0 million.



This Report Made Possible With Generous Support From:
Kim & Guy Sands, PT Brewing Company

Douglas Jones, Stanford Siver

Les & Libby Schnick, Sarah Heiner & Carl Berger
 and the following businesses, non-profits and individual donors:



Phil & Debbie Saxton, Matilda Henry, Maupin Marine Survey, PT Fuel Dock, The Soskin Family Trust, Barbara J. Trailer, Stabile Marine, David Griswold, Stephens Marine, Brooks Townes, Carol & Wilson O'Donnell, Bertram Levy, The Commander's Beach House, On The Flye, Kimberly Matej, Cornelis Prins, Olympic Boat Transport & Crane, Pamela Teagarden, Port Townsend Watercraft, Brian Young, Jochems Property Management, Bill Putney, Patricia Kenna, Fishery Point LLC, Octopus Gardens Diving, Robert D'Arcy Marine Services, Northwest Sails & Canvas, Inc., the many cash donations and all the members of the

Port Townsend Marine Trades Association

With special thanks to Gwendolyn Tracy and Pam Petranek,
 whose untiring efforts made this study possible!

